



# 2300 Series All-In-One

---

## User's Guide

**May 2005**

**[www.lexmark.com](http://www.lexmark.com)**

Lexmark and Lexmark with diamond design are trademarks of Lexmark International, Inc., registered in the United States and/or other countries.

© 2005 Lexmark International, Inc. All rights reserved.

740 West New Circle Road  
Lexington, Kentucky 40550

## Edition: May 2005

**The following paragraph does not apply to any country where such provisions are inconsistent with local law:** LEXMARK INTERNATIONAL, INC., PROVIDES THIS PUBLICATION "AS IS" WITHOUT WARRANTY OF ANY KIND, EITHER EXPRESS OR IMPLIED, INCLUDING, BUT NOT LIMITED TO, THE IMPLIED WARRANTIES OF MERCHANTABILITY OR FITNESS FOR A PARTICULAR PURPOSE. Some states do not allow disclaimer of express or implied warranties in certain transactions; therefore, this statement may not apply to you.

This publication could include technical inaccuracies or typographical errors. Changes are periodically made to the information herein; these changes will be incorporated in later editions. Improvements or changes in the products or the programs described may be made at any time.

Comments about this publication may be addressed to Lexmark International, Inc., Department F95/032-2, 740 West New Circle Road, Lexington, Kentucky 40550, U.S.A. In the United Kingdom and Eire, send to Lexmark International Ltd., Marketing and Services Department, Westhorpe House, Westhorpe, Marlow Bucks SL7 3RQ. Lexmark may use or distribute any of the information you supply in any way it believes appropriate without incurring any obligation to you. You can purchase additional copies of publications related to this product by calling 1-800-553-9727. In the United Kingdom and Eire, call +44 (0)8704 440 044. In other countries, contact your point of purchase.

References in this publication to products, programs, or services do not imply that the manufacturer intends to make these available in all countries in which it operates. Any reference to a product, program, or service is not intended to state or imply that only that product, program, or service may be used. Any functionally equivalent product, program, or service that does not infringe any existing intellectual property right may be used instead. Evaluation and verification of operation in conjunction with other products, programs, or services, except those expressly designated by the manufacturer, are the user's responsibility.

Lexmark and Lexmark with diamond design are trademarks of Lexmark International, Inc., registered in the United States and/or other countries.

© 2005 Lexmark International, Inc.  
All rights reserved.

### UNITED STATES GOVERNMENT RIGHTS

This software and any accompanying documentation provided under this agreement are commercial computer software and documentation developed exclusively at private expense.

### Safety information

- Use only the power supply and power cord provided with this product or the manufacturer's authorized replacement power supply and power cord.
- Connect the power supply cord to an electrical outlet that is near the product and easily accessible.
- Refer service or repairs, other than those described in the user documentation, to a professional service person.

**CAUTION:** Do not set up this product or make any electrical or cabling connections, such as the power supply cord or telephone, during a lightning storm.

### Conventions

**Note:** A *note* identifies something that could help you.

**CAUTION:** A *caution* identifies something that could cause you harm.

**Warning:** A *warning* identifies something that could damage your product hardware or software.

# Contents

---

- Finding more information ..... 7**
  
- Unpacking the All-In-One ..... 8**
  
- Understanding the All-In-One ..... 9**
  - All-In-One parts ..... 9
  - Using the control panel ..... 11
  
- Understanding the All-In-One software ..... 12**
  - Using the Lexmark Imaging Studio ..... 12
  - Using the Lexmark All-In-One Center ..... 15
  - Using Lexmark Fast Pics ..... 18
  - Using the Lexmark Photo Editor ..... 20
  - Using Print Properties ..... 22
  - Using the Lexmark Solution Center ..... 25
  
- Loading paper and original documents ..... 27**
  - Loading paper into the paper support ..... 27
  - Placing documents on the scanner glass ..... 32
  
- Printing ..... 33**
  - Printing a document ..... 33
  - Printing photos ..... 34
  - Printing borderless photos ..... 35
  - Printing other projects ..... 36

<b>Scanning .....</b>	<b>37</b>
Scanning an item .....	37
Customizing a scan job .....	38
<b>Copying .....</b>	<b>43</b>
Making a copy .....	43
Copying photos .....	45
Copying 4x6 photos .....	46
<b>Faxing .....</b>	<b>47</b>
Sending a fax .....	47
Receiving a fax .....	48
<b>Networking the All-In-One .....</b>	<b>49</b>
Overview .....	49
Setting up a network printer with the peer-to-peer method .....	50
Setting up a network printer with the point-and-print method .....	51
<b>Maintaining the All-In-One .....</b>	<b>52</b>
Replacing the print cartridge .....	52
Aligning the print cartridge .....	56
Improving print quality .....	57
Cleaning the scanner glass .....	59
Ordering supplies .....	60
<b>Troubleshooting .....</b>	<b>61</b>
Setup troubleshooting .....	62
Jams and misfeeds troubleshooting .....	65
Print troubleshooting .....	66
Scan and copy troubleshooting .....	69

Error messages troubleshooting .....	71
<b>Notices .....</b>	<b>72</b>
<b>Index .....</b>	<b>75</b>



# Finding more information

---

The Lexmark™ 2300 Series All-In-One comes with helpful resources.

Resource	Description
Setup sheet	Instructions on how to set up the hardware and software and information on setup troubleshooting
CD	<ul style="list-style-type: none"> <li>• Software for the All-In-One, including:               <ul style="list-style-type: none"> <li>– Lexmark Imaging Studio</li> <li>– Lexmark All-In-One Center</li> <li>– Lexmark Fast Pics</li> <li>– Lexmark Photo Editor</li> <li>– Print Properties</li> <li>– Lexmark Solution Center</li> </ul> </li> <li>• Drivers for the All-In-One</li> <li>• An online <i>User's Guide</i> for basic usage information</li> <li>• A Readme file</li> </ul> <p>This file provides last-minute updates about technical changes to the All-In-One. To access the Readme file after you install the All-In-One software, click <b>Start</b> → <b>Programs</b> → <b>Lexmark 2300 Series</b> → <b>Readme</b>.</p>
Lexmark Web site	<p><a href="http://support.lexmark.com">http://support.lexmark.com</a></p> <p>Information on:</p> <ul style="list-style-type: none"> <li>• <b>Upgrades</b>—Software upgrade information</li> <li>• <b>Customer Support</b>—Contact information, order status, and warranty</li> <li>• <b>Downloads</b>—Drivers</li> <li>• <b>Solutions</b>—Troubleshooting hints and tips</li> <li>• <b>Reference</b>—Product documentation and product specifications</li> </ul>

# Unpacking the All-In-One

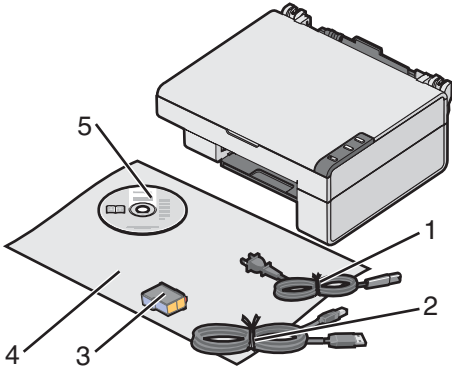
---

To set up the All-In-One, follow the instructions on the Lexmark 2300 Series *Setup* sheet. If problems occur, see “Setup troubleshooting” on page 62.

## Opening the box

These items are in the box with the All-In-One:

**Note:** A USB cable may or may not be included.

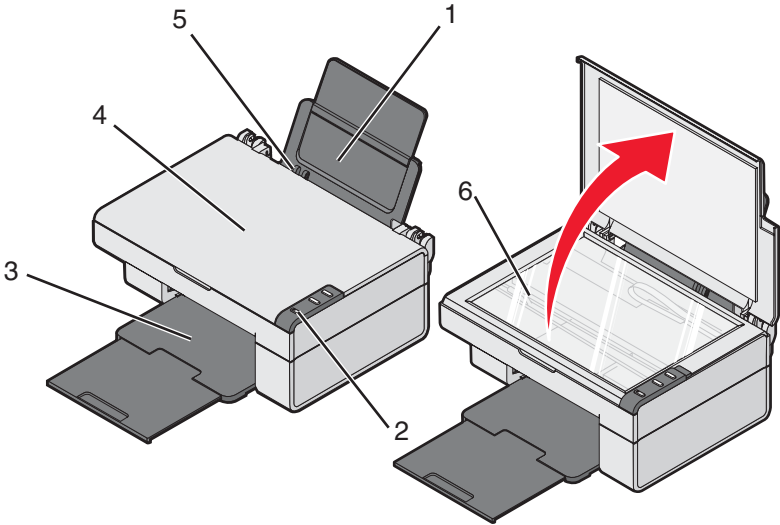


- 1 Power supply cord
- 2 USB cable
- 3 Print cartridge
- 4 *Setup* sheet
- 5 *Software CD*

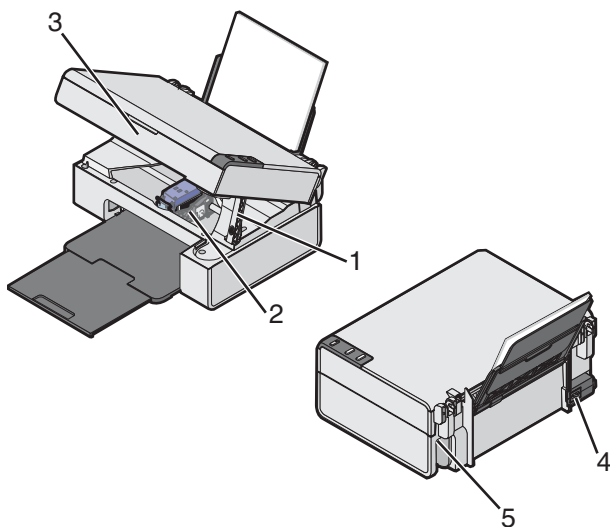


# Understanding the All-In-One

## All-In-One parts

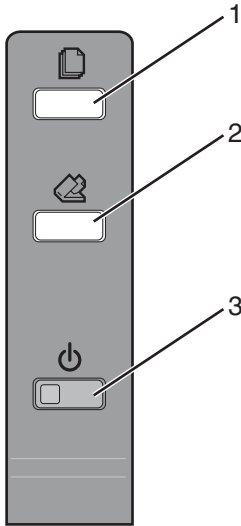





	Use this	To
1	Paper support	Load paper.
2	Control panel	Operate the All-In-One.
3	Paper exit tray	Hold paper as it exits.
4	Top cover	Lift to place or remove an item on the scanner glass.
5	Paper guide	Make sure paper feeds correctly.
6	Scanner glass	Scan, copy, or remove an item.



	Use this	To
1	Scanner support	Hold up the scanner lid.
2	Print cartridge carrier	Install, replace, or remove a print cartridge.
3	Scanner unit	Raise to access the print cartridge carrier.
4	Power supply	Supply power to the All-In-One. <b>Note:</b> Insert the power supply cord into the power supply before connecting the power supply cord into the wall outlet.
5	USB connector	Use the USB cable (sometimes sold separately) to connect the All-In-One to the computer. <b>Note:</b> Insert the USB cable into the USB connector before connecting to the computer.

# Using the control panel



	Use this button	To
1		Make a color copy.
2		Open the All-In-One Center to preview the scan on the computer screen.
3		<ul style="list-style-type: none"> <li>• Turn the All-In-One on or off.</li> <li>• Cancel a print job.</li> <li>• Reset the All-In-One.</li> </ul>

# Understanding the All-In-One software

---

The All-In-One software includes these components:

- Lexmark Imaging Studio (for quick access to each task)
- Lexmark All-In-One Center (for managing tasks and print options)
- Lexmark Fast Pics (for quick digital photo selection and printing)
- Lexmark Photo Editor (for improving photo size, composition, and quality)
- Print Properties (for changing printer settings)
- Lexmark Solution Center (for troubleshooting, maintenance, and cartridge ordering information)

## *Using the Lexmark Imaging Studio*

There are several ways to open the Lexmark Imaging Studio:

- Click **Start** → **Programs** → **Lexmark 2300 Series** → **Lexmark Imaging Studio**.
- Double-click the **Lexmark Imaging Studio** shortcut located on the desktop.







**Note:** The Lexmark Imaging Studio icon can be added to the desktop by dragging the icon from the **Start** → **Programs** → **Lexmark 2300 Series** → **Lexmark Imaging Studio** menu.



- Right-click the **Lexmark Imaging Studio** icon in the system tray (often located in the bottom right corner of the computer screen), and select **Lexmark Imaging Studio**.




## Lexmark Imaging Studio task buttons



These buttons can be used to go directly to the Lexmark All-In-One Center.


Click	To	Details
	Browse & Print Photos	Opens the Lexmark All-In-One Center to the Saved Images tab so you can locate and select photos to reorganize or print. To print, select the photo(s) and click <b>Next</b> to open the Fast Pics program. You can also select from a Creative Tasks list. For more information, see “Printing photos” on page 34.
	Share Photos	Opens a small dialog where you can scan and e-mail a photo or find and e-mail a saved photo. For more information, see “E-mailing a scanned image or document” on page 41 or “E-mailing a saved image or document” on page 41.
	Scan & Edit Text (OCR)	Opens the Lexmark All-In-One Center to the Scanning & Copying tab where you can scan text to a text-editing program. For more information, see “Editing scanned text using Optical Character Recognition (OCR)” on page 42.
	Scan	Opens the Lexmark All-in-One Center to the Scanning & Copying tab where you can scan photos or documents to be stored on your computer. For more information, see “Scanning an item” on page 37.

Click	To	Details
	Copy	Opens the Lexmark All-In-One Center to the Scanning & Copying tab where you can make a copy of your photos or documents. For more information, see "Making a copy" on page 43.
	Fax	Opens a small dialog that lets you select whether you want to scan and send a fax, or receive a fax or view settings/history. For more information, see "Sending a fax" on page 47 or "Receiving a fax" on page 48.

Click	To
	Find out more about what you can do with the software.
	Use the tools in the Lexmark Solution Center to keep your All-In-One working optimally. For more information, see "Using the Lexmark Solution Center" on page 25.
	Visit the Lexmark Web site.

## Using the Lexmark All-In-One Center

There are several ways to open the Lexmark All-In-One Center:

- Through the Lexmark Imaging Studio. For more information, see “Using the Lexmark Imaging Studio” on page 12.
- Click **Start** → **Programs** → **Lexmark 2300 Series** → **All-In-One Center**.
- Right-click the **Lexmark Imaging Studio** icon in the system tray (often located in the bottom right corner of the computer screen), and select **Lexmark 2300 Series All-In-One Center**.
- Press the  button on the All-In-One control panel.

**Note:** The last method opens the All-In-One Center and also makes a preview of the item on the scanner glass.



# Scanning & Copying tab

Use the Scanning & Copying tab to perform tasks with images you scan or copy.

From this section	You can
Preview Now	Click <b>Preview Now</b> to view an image of what will be printed or copied.
Scan	<ul style="list-style-type: none"> <li>• Select a program to which you want to send the scanned images.</li> <li>• Click <b>Scan Now</b> to begin scanning.</li> <li>• Click <b>See More Scan Settings</b> to view all settings:               <ul style="list-style-type: none"> <li>– Select what type of image is being scanned.</li> <li>– Select a scan quality.</li> <li>– Select to <b>Display Advanced Scan Settings</b>.</li> </ul> </li> </ul>
Copy	<ul style="list-style-type: none"> <li>• Select the quantity and color of the copies.</li> <li>• Click <b>Copy Now</b> to begin copying.</li> <li>• Click <b>See More Copy Settings</b> to view all settings:               <ul style="list-style-type: none"> <li>– Select a quality setting.</li> <li>– Select a blank paper size.</li> <li>– Select the size of the original.</li> <li>– Lighten or darken the copies.</li> <li>– Reduce or enlarge the copies.</li> <li>– Select to <b>Display Advanced Copy Settings</b>.</li> </ul> </li> </ul>
Creative Tasks	<p>Choose from a variety of creative ideas:</p> <ul style="list-style-type: none"> <li>– Repeat an image several times on a page.</li> <li>– Enlarge or reduce an image.</li> <li>– Print an image as a multiple-page poster.</li> <li>– E-mail an image.</li> <li>– Fax using a PC modem.</li> <li>– Save an image on the computer.</li> <li>– Save multiple photos.</li> <li>– Edit text found in a scanned document.</li> <li>– Modify an image with a photo editor.</li> </ul>

**Note:** For more information about the Scanning & Copying tab, click **Help** at the top of the screen.



## Saved Images tab

Use the Saved Images tab to perform tasks with images that are saved on the computer.

**Note:** You must select an image before making selections on the Saved Images tab. Click **Show Folders** to browse to the folder where your photos are stored, and click **Hide Folders** to continue.

From this section	You can
Open With	Select a program to which you want to send the saved image.
Photo Prints	<ul style="list-style-type: none"><li>• Print documents or single photos.</li><li>• Click <b>Next</b> to open Fast Pics after selecting photos.</li><li>• Click <b>Show More Printing Options</b> for more choices:<ul style="list-style-type: none"><li>– Select the quantity and color of the copies.</li><li>– Click <b>Print Now</b> to print the copies.</li><li>– Select a quality setting for the copies.</li><li>– Select a paper size.</li><li>– Lighten or darken the copies.</li><li>– Reduce or enlarge the copies.</li><li>– Choose to <b>Display Print Settings</b>.</li></ul></li></ul>
Creative Tasks	<ul style="list-style-type: none"><li>• Print an album page with photos of various sizes.</li><li>• Enlarge or reduce an image.</li><li>• Print an image as a multiple-page poster.</li><li>• E-mail an image.</li><li>• Fax using a PC modem.</li><li>• Edit text found in a scanned document.</li><li>• Modify an image with a photo editor.</li></ul>

**Note:** For more information about the Saved Images tab, click **Help** at the top of the screen.

## Maintain/Troubleshoot link

The Maintain/Troubleshoot link provides you with direct access to the Lexmark Solution Center. Clicking Maintain/Troubleshoot lets you choose from these topics:

- Maintain or fix quality problems
- Troubleshoot All-In-One problems
- Device status and ink levels
- More printing ideas and how-to's
- Contact information
- Advanced (skin, voice, and communication options)
- View the software version and copyright information

## Help Link

The Help link provides you with instant access to the Help program. Click the **Index** button, and use the Find function to locate more information about the All-In-One or its software.

## *Using Lexmark Fast Pics*

Lexmark Fast Pics is an application that is part of the All-In-One Center and supports photo printing. To open Lexmark Fast Pics:

- 1** Open the All-In-One Center. For more information, see “Using the Lexmark All-In-One Center” on page 15.
- 2** Click the **Saved Images** tab.
- 3** Click **Show Folders** to browse to the folder where the saved images are stored.
- 4** Click **Hide Folders** to close the folder window.
- 5** Click to select the photos you want to print.
- 6** From the Photo Prints... area, click **Next**.



## ***Using Lexmark Fast Pics to print photos***

- 1** Open Lexmark Fast Pics. For more information, see “Using Lexmark Fast Pics” on page 18.
- 2** If necessary, click **Change Folder** to browse to the folder where your photos are stored.
- 3** Click to place a check mark next to each photo you want to print.
- 4** If you would like to edit your photos, click **Edit**.
- 5** Use the editing tools to edit your photo:
  - Red Eye
  - Auto Fix
  - Crop
  - Rotate
- 6** When you are done editing, click **Done**.
- 7** Save the photos as new separate files, or replace the original files with the edits.

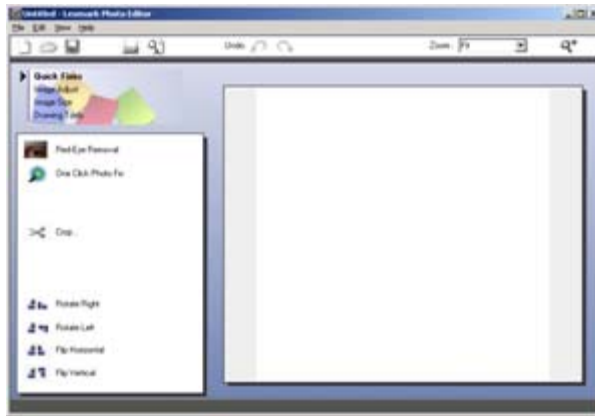
**Note:** To continue without saving, click **Continue without saving**.

- 8** Select a **Size for each photo**.

- 9 Select a **Paper size** in printer.
- 10 Select the **Number of copies**.
- 11 Click the **Print Now** button to print the photos.

## ***Using the Lexmark Photo Editor***

To open the Lexmark Photo Editor, click **Start** → **Programs** → **Lexmark 2300 Series** → **Lexmark Photo Editor**.



You can also open the Lexmark Photo Editor from the All-In-One Center:

- 1 Select the **Saved Images** tab.
- 2 Click **Show Folders** to browse to the folder where the saved images are stored.
- 3 Click **Hide Folders** to close the folder window.
- 4 Select the photo(s) you want to edit.
- 5 From the “Open With...” drop-down menu, select **Lexmark Photo Editor**.
- 6 Click **Open Now**.

## ***Lexmark Photo Editor task menus***

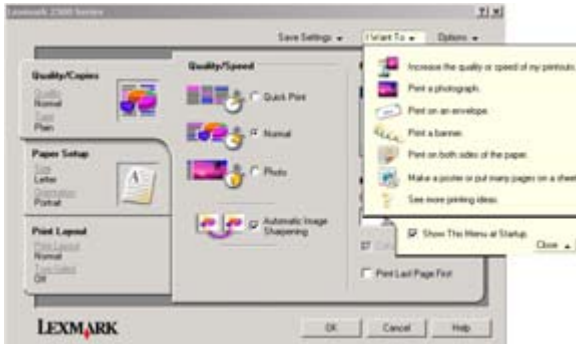
<b>From</b>	<b>You can</b>
Quick Fixes	<ul style="list-style-type: none"><li>• Remove red eye caused by light reflection.</li><li>• Fix the photo with one click.</li><li>• Crop the image.</li><li>• Rotate the image.</li><li>• Flip the image.</li></ul>
Image Adjust	<ul style="list-style-type: none"><li>• Adjust the color depth.</li><li>• Adjust the color balance.</li><li>• Colorize the image.</li><li>• Colorize the image to sepia tones.</li><li>• Adjust the Brightness/Contrast.</li><li>• Adjust the blur.</li><li>• Adjust the sharpness.</li><li>• Despeckle (blur) the image to remove dust and scratches.</li><li>• Adjust the exposure.</li><li>• Adjust the color level.</li></ul>
Image Size	<ul style="list-style-type: none"><li>• Change the units of measurement.</li><li>• Resize the image.</li><li>• Crop the image.</li></ul>
Drawing Tools	<ul style="list-style-type: none"><li>• Select an area by dragging a box around it. This is for text box placement and cutting and copying areas.</li><li>• Add text.</li><li>• Fill pixels with color.</li><li>• Draw with a pencil tool.</li><li>• Draw with a line tool.</li><li>• Erase areas.</li><li>• Paint areas with a paintbrush tool.</li><li>• Pick up a color using the eyedropper.</li></ul>

# Using Print Properties

Print Properties is the software that controls the printing function. You can change the settings in Print Properties based on the type of project you want to create. You can open Print Properties from almost any program:

- 1 From the program “File” menu, click **Print**.
- 2 From the Print dialog, click the **Properties**, **Preferences**, **Options**, or **Setup** button.

The Print Properties screen appears along with the “I Want To” menu.



Changes made to the settings from the print dialog apply only to the file you have open.

Print Properties can also be accessed from the Printers folder without opening any other program:

- 1 Select **Start → Settings → Printers** or **Printers and Faxes**.

*or*

Select **Start → Control Panel → Printers and Other Hardware → Printers and Faxes**.

- 2 Right-click **Lexmark 2300 Series**, and select **Printing Preferences**.

- 3 Make the changes you want, and click **OK**.

Changes made to the printer settings from the Printers folder become the default settings for most programs.

## The I Want To menu

The “I Want To” menu appears when you open Print Properties. It contains a variety of task wizards—printing a photograph, printing an envelope, printing a banner, printing on both sides of the paper, printing a poster—to help you pick the correct settings for the project.

Click **See more printing ideas** for more options. Close the menu for a full view of the Print Properties dialog.

## Print Properties tabs

All of the print settings are on the three main tabs of the Print Properties software: Quality/Copies, Paper Setup, and Print Layout.

### Quality/Copies tab

From	Select
Quality/Speed	<b>Quick Print, Normal, or Photo</b> , depending on the quality of output you want. Quick Print is the fastest option.
Paper Type	Your paper type from the menu options
Multiple Copies	<ul style="list-style-type: none"><li>• The number of copies you want to print</li><li>• <b>Collate Copies</b> if you want to print more than one copy of a document. This option prints all the pages of the first copy, and then all the pages of the second copy, and so on.</li><li>• <b>Print Last Page First</b> if you want to print the pages in reverse order</li></ul>
Select <b>Automatic Image Sharpening</b> to sharpen the image automatically based on image content.	

### Paper Setup tab

From	Select
Paper Size	<b>Paper, Envelope, Banner, or Borderless</b> , and then select the size specific to the paper type. If the paper size is not listed, select <b>Custom Size</b> .
Orientation	<b>Portrait or Landscape</b>



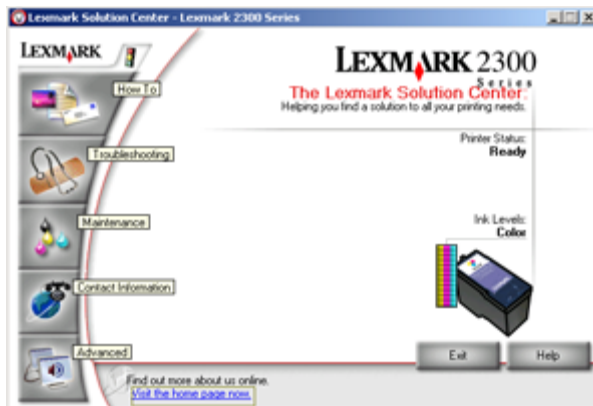
## Print Layout tab

From	Select
Layout	<b>Normal, Banner, Mirror, N-up, Poster, Booklet or Borderless</b>
Duplexing	<ul style="list-style-type: none"><li>• <b>Two-Sided</b> to print the document on both sides of the page</li><li>• <b>Side Flip</b> or <b>Top Flip</b> to set which way the pages of the finished documents turn</li></ul> <p><b>Note:</b> If you select <b>Side Flip</b>, the pages of the document turn like the pages of a magazine. If you select <b>Top Flip</b>, the pages turn like the pages of a legal pad.</p>

## Using the Lexmark Solution Center

To open the Lexmark 2300 Series Solution Center (LSC):

- Click **Start** → **Programs** → **Lexmark 2300 Series** → **Lexmark Solution Center**.
- Right-click the **Lexmark Imaging Studio** icon in the system tray (often located in the bottom right corner of the computer screen), and select **Lexmark 2300 Series Solution Center**.



## Lexmark Solution Center tabs

From this tab	You can
Printer Status (Main dialog)	<ul style="list-style-type: none"> <li>• View the status of the All-In-One. For example, while printing, the status is <b>Busy Printing</b>.</li> <li>• View the ink levels of the print cartridge.</li> <li>• View an indicator showing if there is a cartridge problem.</li> <li>• Access the Lexmark Web site.</li> </ul>
How To	Learn how to: <ul style="list-style-type: none"> <li>• Use basic features.</li> <li>• Print, scan, copy, and fax.</li> <li>• Print banners, iron-on transfers, photos, envelopes, and other items.</li> <li>• Find and change settings.</li> </ul>
Troubleshooting	<ul style="list-style-type: none"> <li>• Learn about the current status of the All-In-One.</li> <li>• Solve All-In-One problems.</li> </ul>
Maintenance	<ul style="list-style-type: none"> <li>• Install a new print cartridge.</li> <li>• View shopping options for new cartridges.</li> <li>• Print a test page.</li> <li>• Clean to fix horizontal streaks.</li> <li>• Align to fix blurry edges.</li> <li>• Troubleshoot other ink problems.</li> </ul>
Contact Information	Learn how to contact Lexmark on the Web and by phone.
Advanced	<ul style="list-style-type: none"> <li>• Change the appearance of the Printing Status window, or turn printing voice notification on or off.</li> <li>• Change the network printing settings.</li> <li>• Participate in Lexmark Connect.</li> <li>• Obtain software version information.</li> </ul>

**Note:** For more information, click **Help** at the bottom of the Lexmark Solution Center screen.

# Loading paper and original documents

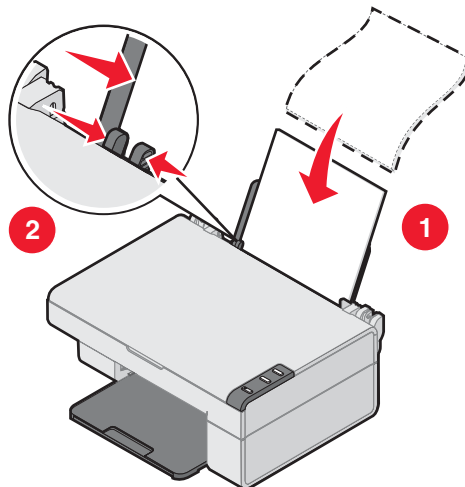
---

## *Loading paper into the paper support*

You can load up to 100 sheets of plain paper, depending on the thickness of the paper.

- 1 Place the paper against the right side of the paper support.

**Note:** Do not force the paper into the All-In-One.



- 2 Squeeze the release tab, and slide the paper guide to the right until it rests against the edge of the paper.

**Note:** If you are using A4 or letter size paper, adjusting the paper guide may not be necessary.

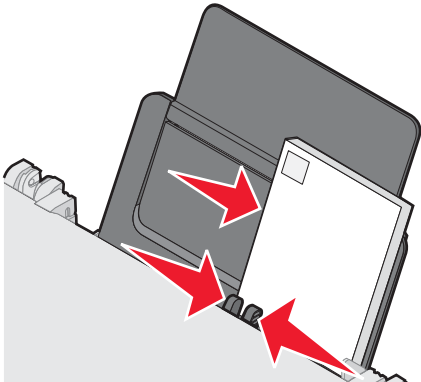
## Loading specialty media

Follow these guidelines when loading specialty media:

Load	Make sure
Up to 100 sheets of inkjet paper (depending on the thickness)	<ul style="list-style-type: none"> <li>• The print side is facing you.</li> <li>• The paper guide rests against the edge of the paper.</li> </ul>
Up to 10 iron-on transfers	<ul style="list-style-type: none"> <li>• The print side (blank side) is facing you.</li> <li>• The paper guide rests against the edge of the iron-on transfers.</li> <li>• You follow the loading instructions on the iron-on transfer packaging.</li> </ul>
Up to 25 sheets of photo/glossy paper	<ul style="list-style-type: none"> <li>• The glossy or coated side is facing you.</li> <li>• You use photo paper that is made for inkjet printers.</li> <li>• If the paper came with instructions, you read them carefully.</li> <li>• You load the photo paper vertically against the right side of the paper support.</li> <li>• The paper guide rests against the edge of the photo paper.</li> </ul> <p><b>Note:</b> To prevent smudging, remove each photo as it exits the All-In-One, and then let it dry before stacking.</p>

Load	Make sure
Banner paper	<ul style="list-style-type: none"> <li>• You remove any paper from the paper support before inserting banner paper.</li> <li>• You select A4 or letter size Banner paper in Print Properties. See “Changing print settings” on page 33.</li> </ul> <p><b>Note:</b> Failure to choose the correct paper size will cause a paper jam.</p> <ul style="list-style-type: none"> <li>• You place a stack of banner paper on or behind the All-In-One, with only the number of sheets you need to print the banner.</li> <li>• You load the leading edge of the banner paper into the All-In-One against the right side of the support, as shown.</li> </ul> <div data-bbox="527 555 871 887" data-label="Image"> </div> <ul style="list-style-type: none"> <li>• You squeeze and slide the paper guide to the left edge of the banner paper.</li> </ul>
Up to 25 sheets of greeting card stock, postcards, or photo cards	<ul style="list-style-type: none"> <li>• If the cards came with instructions, you read them carefully.</li> <li>• The print side is facing you.</li> <li>• The cards are loaded vertically against the right side of the paper support.</li> <li>• You do not force the cards into the All-In-One.</li> <li>• You squeeze and slide the paper guide to the left side of the cards.</li> </ul>

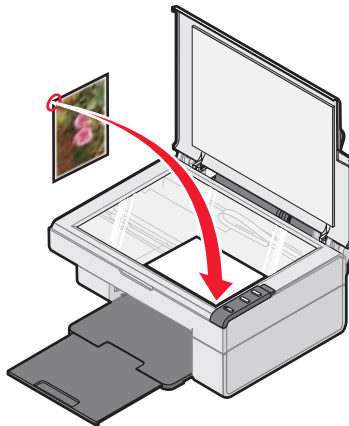
Load	Make sure
Up to 20 transparencies	<ul style="list-style-type: none"> <li>• The rough sides of the transparencies are facing you.</li> <li>• The paper guide rests against the edge of the transparencies.</li> </ul> <p><b>Note:</b> Since transparencies require more drying time, we recommend that you remove each transparency as it exits, and allow it to dry to avoid ink smudging.</p>
Up to 100 sheets of coated or premium paper	<ul style="list-style-type: none"> <li>• If the paper came with instructions, you read them carefully.</li> <li>• You load the paper vertically against the right side of the paper support.</li> <li>• If there is a watermark on the paper, you place the mark facing away from you.</li> <li>• You do not force the paper into the All-In-One.</li> <li>• You squeeze and slide the paper guide to the left side of the paper.</li> </ul>

Load	Make sure
Up to 10 envelopes	 <ul style="list-style-type: none"><li>• The print side is facing you.</li><li>• The envelopes are loaded vertically against the right side of the paper support.</li><li>• The stamp location is in the upper left corner.</li><li>• The paper guide rests against the edge of the envelopes.</li></ul> <p><b>Note:</b> Do not load envelopes with:</p> <ul style="list-style-type: none"><li>• Holes, perforations, or deep embossing</li><li>• Metal clasps, string ties, or metal folding bars</li><li>• Exposed flap adhesive</li></ul>

## ***Placing documents on the scanner glass***

- 1** Open the top cover of the All-In-One.
- 2** Place the item you want to scan or copy face down on the glass. Make sure the longer edge of the document is parallel to the front of the All-In-One.

**Note:** Make sure the corner of the document fits securely in the front right corner of the scanner glass.



- 3** Close the top cover.



# Printing

---

## *Printing a document*

- 1** Load paper. For more information, see “Loading paper into the paper support” on page 27.
- 2** With the document open, click **File** → **Print**.  

If you want to change print settings, see “Changing print settings” on page 33.
- 3** Click **Properties**, **Preferences**, **Options**, or **Setup**, and select the “I Want To” menu to select a print wizard for a project such as printing an envelope or a banner.
- 4** From the Wizard, click **OK**.
- 5** From Print Properties, click **OK**.
- 6** From the Print dialog, click **Print**.

## *Changing print settings*

- 1** With the document open, click **File** → **Print**.
- 2** Click **Properties**, **Preferences**, **Options**, or **Setup** to customize print settings.

The Print Properties dialog appears.

- 3 Click one of the tabs to change the print settings.

**Note:** For detailed descriptions of the Print Properties tabs, see “Print Properties tabs” on page 24.

- 4 After making the changes in Print Properties, click **OK** at the bottom of the screen to return to the Print dialog.
- 5 Click **OK** or **Print** to complete the task.

## ***Printing photos***

- 1 Load photo paper with the print side facing you. For more information, see “Loading specialty media” on page 28.
- 2 With the photo open, click **File** → **Print**.
- 3 Click **Properties**, **Preferences**, **Options**, or **Setup** to customize print settings.

The Print Properties dialog appears.

**Note:** If you are using the Lexmark Photo Editor, select **View All Printer Settings** to view Print Properties.

- 4 From the Quality/Copies tab, select **Photo**.
- 5 From the Paper Type area, choose a paper type from the drop-down menu.

**Note:** Photo/glossy or coated paper is recommended for printing photos.

- 6 From the Paper Setup tab, select the paper size and orientation of the photo.
- 7 From the Print Layout tab, select the layout of the photo.
- 8 When you are finished customizing the photo, click **OK**.
- 9 Click **OK** or **Print** to complete the task.

## ***Printing borderless photos***



- 1** Load photo paper with the print side facing you. For more information, see “Loading specialty media” on page 28.
- 2** Open the All-In-One Center. For more information, see “Using the Lexmark All-In-One Center” on page 15.
- 3** Click the **Saved Images** tab.
- 4** From the Creative Tasks section, select **Print an album page with various photo sizes**.
- 5** Click **Change the category of layouts listed above**.
- 6** From the Selected Layouts box, select **Only Borderless**.
- 7** Click **OK**.
- 8** Select a paper size for the photos.
- 9** From the Page Layout, select a page layout.
- 10** Drag the photos onto the page.
- 11** Click **Printer Settings**.
- 12** Select the paper size and paper type.
- 13** From the “Quality” drop-down menu, select **Photo**, and click **OK**.

## 14 Click **Print Now**.

### ***Printing other projects***

The “I Want To” menu provides wizards for creating projects. You can print a photo, print on an envelope, print a banner, make a poster, create a booklet, or print a greeting card.

- 1 With the document open, click **File** → **Print**.
- 2 Click **Properties**, **Preferences**, **Options**, or **Setup** to customize print settings.

The Print Properties dialog appears along with the “I Want To” menu.

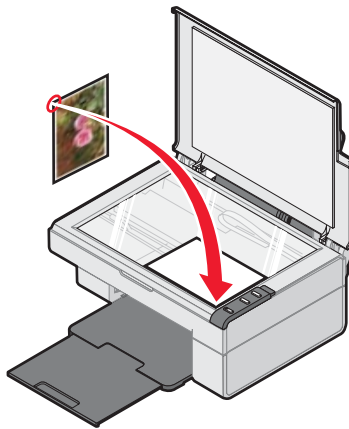
- 3 Select one of the available projects, or click **See more printing ideas**.
- 4 Follow the instructions on the computer screen to complete the project.


# Scanning

---

## Scanning an item

- 1 Open the top cover of the All-In-One.
- 2 Place the item you want to scan on the scanner glass. For more information, see “Placing documents on the scanner glass” on page 32.



- 3 Close the top cover.
- 4 Press the  button on the All-In-One control panel.

The All-In-One Center appears on the computer screen with a preview of the item on the scanner glass.
- 5 From the “Send scanned image to:” drop-down menu, select a program.
- 6 Adjust the dotted lines to fit around the portion of the image you want to scan.

- 7 Customize the scan settings. For more information, see “Customizing a scan job” on page 38.
- 8 Click **Scan Now** to complete the scan.

## ***Customizing a scan job***


- 1 Open the All-In-One Center. For more information, see “Using the Lexmark All-In-One Center” on page 15.
- 2 From the Scanning & Copying tab, click **See More Scan Settings**.
- 3 From the What is being scanned? area, select an option.
- 4 From the “Select Scan Quality” drop-down menu, select an option.
- 5 Click **Display Advanced Scan Settings** to change advanced options.
- 6 Click the tabs to make changes as needed. For a description of the tabs, see “Advanced Scan Settings” on page 39.
- 7 When you are finished customizing the scan settings, click **OK** to save.
- 8 To scan, click **Scan Now**.

# Advanced Scan Settings

Click this tab	To
Scan	<ul style="list-style-type: none"> <li>• Choose the color depth and scan resolution.</li> <li>• Choose to scan using pure optical resolution.</li> <li>• Choose whether to auto-crop more or less of the scanned image.</li> <li>• Select the area to be scanned.</li> <li>• Choose to convert the scanned item to text for editing.</li> <li>• Choose to scan multiple images before output.</li> <li>• Update the list of programs to send scans.</li> <li>• Update the default fax driver.</li> </ul>
Image Enhancements	<ul style="list-style-type: none"> <li>• Straighten images after scan (deskew).</li> <li>• Choose whether to sharpen or blur the images.</li> <li>• Adjust the brightness of the image.</li> <li>• Adjust the color correction curve (gamma) of the image.</li> </ul>
Image Patterns	<ul style="list-style-type: none"> <li>• Smooth the conversion of a gray image to a black and white dot pattern (dither).</li> <li>• Remove image patterns from magazines or newspapers (descreen).</li> <li>• Select whether to process with Best quality or Best speed.</li> <li>• Reduce more or less of the background noise on the color document.</li> </ul>

**Note:** For more information, click **Help** at the bottom of the screen.

## Previewing items before scanning

From the computer	From the control panel
<ol style="list-style-type: none"><li>1 Place the item on the scanner glass. For more information, see “Placing documents on the scanner glass” on page 32.</li><li>2 Open the All-In-One Center. For more information, see “Using the Lexmark All-In-One Center” on page 15. The All-In-One Center appears.</li><li>3 Make sure the Scanning &amp; Copying tab is selected.</li><li>4 From the Scan section, click <b>Preview Now</b>.</li><li>5 Adjust the dotted lines to fit around the portion of the image you want to scan.</li></ol>	<ol style="list-style-type: none"><li>1 Place the item on the scanner glass. For more information, see “Placing documents on the scanner glass” on page 32.</li><li>2 Press the  button. On the computer screen, the All-In-One Center appears with a preview of the item.</li><li>3 Adjust the dotted lines to fit around the portion of the image you want to scan.</li></ol>

## Finishing the scan

- 1 Select the scan destination from the drop-down menu.

**Note:** If the program you want to use is not listed, select **Search for more...** in the drop-down box. On the screen that follows, click **Add** to locate and add the program to the list.

- 2 Change any settings as needed. For more information, see “Customizing a scan job” on page 38.
- 3 When you are finished customizing the image, click **Scan Now**.

When the document has finished processing, it will open the program to which you chose to send the image.



## ***E-mailing a scanned image or document***

- 1** Open the Lexmark Imaging Studio. For more information, see “Using the Lexmark Imaging Studio” on page 12.
- 2** Click the **Share Photos** button.
- 3** Select **Scan and e-mail a photo**.
- 4** Follow the instructions on the computer screen to prepare the item for e-mailing.
- 5** Click **Next**.
- 6** Write a note to accompany the attached item, and then send it.

## ***E-mailing a saved image or document***

- 1** Open the Lexmark Imaging Studio. For more information, see “Using the Lexmark Imaging Studio” on page 12.
- 2** Click the **Share Photos** button.
- 3** Select **Find and e-mail a saved photo**.
- 4** Click **Show Folders** to browse to the folder where the saved images are stored.
- 5** Click **Hide Folders** to close the folder window.
- 6** Select the photo(s) you want to send.
- 7** Follow the instructions on the computer screen to prepare the item for e-mailing.
- 8** Click **Attach Now**.
- 9** Write a note to accompany the attached item, and then send it.

## ***Editing scanned text using Optical Character Recognition (OCR)***

- 1** Place the image face down on the scanner glass. For more information, see “Placing documents on the scanner glass” on page 32.
- 2** Open the Lexmark Imaging Studio. For more information, see “Using the Lexmark Imaging Studio” on page 12.
- 3** Click the **Scan and Edit Text (OCR)** button.

The Edit text in a document feature appears. You can preview the image if you want.

- 4** From the “Select your text editor” drop-down menu, select a word-processing or text-editing program.
- 5** If you have more than one page, click **Yes, prompt me for each page**.
- 6** Click **Send Now**.

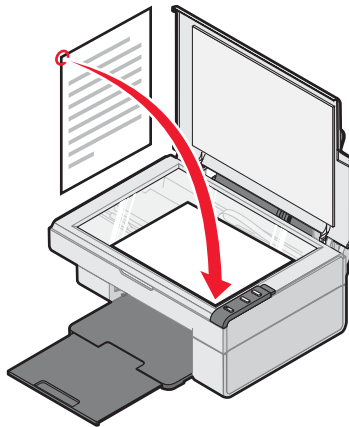
The text-editing program appears, and the scanned text appears on the computer screen.


# Copying

---

## *Making a copy*

- 1 Open the top cover of the All-In-One.
- 2 Place the item you want to copy on the scanner glass. For more information, see “Placing documents on the scanner glass” on page 32.



- 3 Close the top cover.
- 4 Change copy settings as needed. For more information, see “Changing copy settings” on page 44.
- 5 Press the  button.

## ***Changing copy settings***

- 1** Open the Lexmark Imaging Studio. For more information, see “Using the Lexmark Imaging Studio” on page 12.
- 2** Click the **Copy** button.
- 3** Select a copy quantity and color.
- 4** Click **See More Copy Settings** to:
  - Choose a copy quality.
  - Select the Blank Paper size.
  - Select the original document size.
  - Lighten or darken the document.
- 5** Click **Display Advanced Copy Settings** to change options such as paper size or quality. For more information, see “Advanced Copy Settings” on page 45.
- 6** When you are finished customizing the copy settings, click **OK**.
- 7** On the main page, click **Copy Now**.

# Advanced Copy Settings

Click this tab	To
Print	<ul style="list-style-type: none"> <li>• Select the paper size.</li> <li>• Select the paper type.</li> <li>• Select borderless printing options.</li> <li>• Select the print quality.</li> </ul>
Scan	<ul style="list-style-type: none"> <li>• Select the color depth.</li> <li>• Select the scan resolution.</li> <li>• Choose to scan using pure optical resolution.</li> <li>• Select whether to auto-crop the scanned image.</li> <li>• Select an exact size to be scanned.</li> </ul>
Image Enhancements	<ul style="list-style-type: none"> <li>• Select whether to deskew the image.</li> <li>• Select whether to sharpen blurry edges.</li> <li>• Adjust the brightness of the image.</li> <li>• Adjust the color correction curve (gamma) of the image.</li> </ul>
Image Patterns	<ul style="list-style-type: none"> <li>• Smooth the conversion of a gray image to a black and white dot pattern (dither).               <ul style="list-style-type: none"> <li>– Select whether to process for Best quality or Best speed.</li> <li>– Select whether you are scanning a newspaper, magazine, or lithograph.</li> <li>– Control the darkness of the edges of the text.</li> </ul> </li> <li>• Remove wavy patterns from magazines or newspapers (descreen).</li> <li>• Reduce more or less of the background noise (scratches) on the color document.</li> </ul>

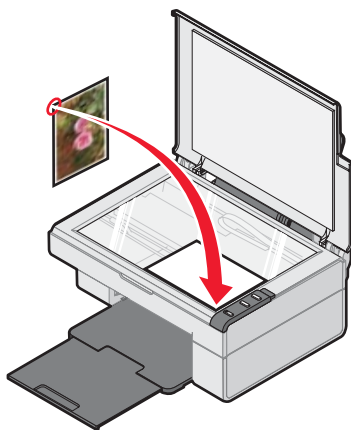
## Copying photos


- 1 Place the photo face down on the scanner glass. For more information, see “Placing documents on the scanner glass” on page 32.
- 2 Load photo paper with the print side facing you. For more information, see “Loading specialty media” on page 28.

- 3 Open the Lexmark All-In-One Center. For more information, see “Using the Lexmark All-In-One Center” on page 15.
- 4 From the Scanning & Copying tab, click **Preview Now**.
- 5 Adjust the dotted lines to fit around the part of the image you want to print.
- 6 From the Copy area, select **Photo**.
- 7 Select a copy quantity and color.
- 8 To further customize the photo, click **See More Copy Settings**.
- 9 When you are finished customizing the settings, click **Copy Now**.

## ***Copying 4x6 photos***

- 1 Place the 4x6 photo face down on the scanner glass. For more information, see “Placing documents on the scanner glass” on page 32.



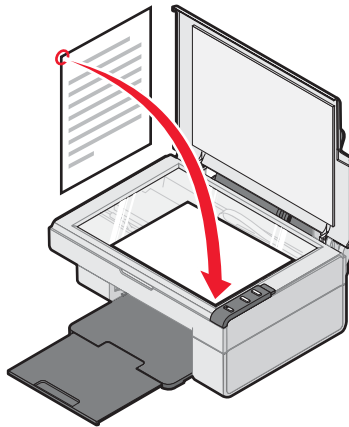
- 2 Load photo paper with the print side facing you. For more information, see “Loading specialty media” on page 28.
- 3 Press and hold the  button for three seconds.  
The All-In-One prints a 4x6 copy of your photo.

# Faxing

---

## *Sending a fax*

- 1 Place the document face down on the scanner glass. For more information, see “Placing documents on the scanner glass” on page 32.



- 1 Open the Lexmark Imaging Studio. For more information, see “Using the Lexmark Imaging Studio” on page 12.
- 2 Click the **Fax** button.  
The Fax dialog appears.
- 3 Click **Scan and send a fax**.  
The Lexmark All-In-One Center appears on the Scanning & Copying tab.
- 4 If you want to see a preview, click **Preview Now** in the upper right corner of the Lexmark All-In-One Center.  
An image of the scanned item appears in the preview section.

**Note:** This is only a quick preview. You scan the image in a later step.

- 5** Click **Next**.
- 6** Follow the instructions on the computer screen to complete the task.

## ***Receiving a fax***

To set up your computer to receive a fax:

- 1** Open the Lexmark Imaging Studio. For more information, see “Using the Lexmark Imaging Studio” on page 12.
- 2** Click the **Fax** button.  
The Fax dialog appears.
- 3** Click **Receive a fax or view settings/history** to open the fax software.

**Note:** Faxes can be received only when the fax software is open. When a fax is received, you can double-click the fax in the status window to view it.

- 4** Click the printer icon to print the fax.



# Networking the All-In-One

---

## Overview

A network is a group of computers or computer systems linked together for the purpose of sharing resources, such as printers, files, or an Internet connection.

The All-In-One is network-capable and can be networked in one of two ways:

- Using the peer-to-peer method
- Using the point-and-print method

**Note:** The All-In-One cannot scan across a network.

Peer-to-peer	Point-and-print
Requirements: <ul style="list-style-type: none"><li>• You must install the driver software on all computers that will use the All-In-One.</li><li>• The host computer must be on any time the client wants to print.</li></ul>	Requirements: <p>The host computer must be on any time the client wants to print.</p>
See “Setting up a network printer with the peer-to-peer method” on page 50.	See “Setting up a network printer with the point-and-print method” on page 51.

## ***Setting up a network printer with the peer-to-peer method***

With this method, the printer driver is fully installed on each client computer. Network clients retain control of driver modifications. The client computer handles the print job processing.

- 1** Follow the instructions on the Lexmark 2300 Series *Setup* sheet to install the hardware and software on the host computer.
- 2** From the host computer, Click **Start → Settings → Control Panel**.
- 3** Select **Network and Dial-up Connections**.
- 4** Select the network connection.
- 5** Click **Properties**.
- 6** Make sure a check mark appears next to **File and Printer Sharing for Microsoft Networks**.  
  
If no check mark appears, click the box next to **File and Printer Sharing for Microsoft Networks**.
- 7** Click **OK**.
- 8** From the client computer, insert the All-In-One software CD.
- 9** Follow the instructions on the client computer screen.
- 10** Select **USB cable** when asked how the All-In-One is connected to the computer.
- 11** Select **Peer to Peer** when asked how the All-In-One is connected to the network.
- 12** Repeat steps 8 through 11 for each of the client computers.

## ***Setting up a network printer with the point-and-print method***

With this method, the printer driver is partially installed on each of the client computers networked to the host computer. The host computer controls driver changes and handles print job processing.

- 1** Follow the instructions on the Lexmark 2300 Series *Setup* sheet to install hardware and software on the host computer.
- 2** From the host computer, click **Start → Settings → Printers or Printers and Faxes**.
- 3** Right-click the **Lexmark 2300 Series** icon.
- 4** Click **Sharing**.
- 5** Click **Shared As**, and then type a distinctive name for the All-In-One.
- 6** Click **OK**.
- 7** From the client computer, double-click **Network Neighborhood**, **My Network Places**, or **My Network**.
- 8** Find the host name of the server, and look for the shared name you assigned to the All-In-One.
- 9** Right-click the All-In-One icon, and then select **Open**, **Install**, or **Connect**.

# Maintaining the All-In-One

---

## Replacing the print cartridge

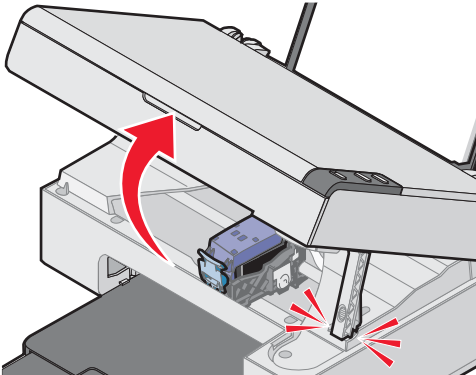
Your All-In-One uses the following cartridge:

Print cartridge part number
<ul style="list-style-type: none"><li>• 1</li><li>• 2</li></ul>

## Removing a used cartridge

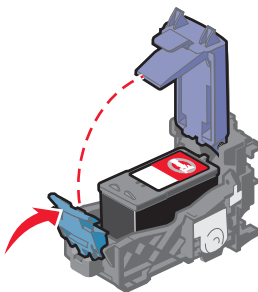
**Note:** Make sure the All-In-One is on.

- 1 Lift the scanner unit.
- 2 *Snap* the scanner support into position to hold up the scanner unit.

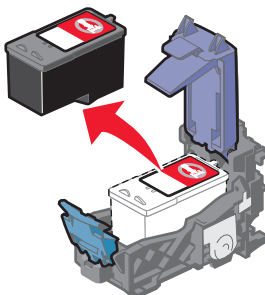


The print cartridge carrier moves and stops at the loading position unless the All-In-One is busy.

- 3** Press down on the cartridge lever to raise the cartridge lid.

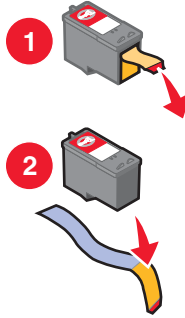


- 4** Remove the old cartridge, and dispose of it. For more information, see “Recycling Lexmark products” on page 60.



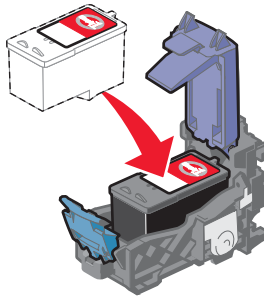
## Installing the print cartridge

- 1 If you are installing a new print cartridge, remove the sticker and transparent tape from the back and bottom of the cartridge.

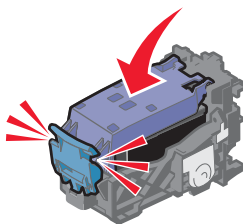


**Warning:** Do *not* touch the gold contact area on the cartridges.

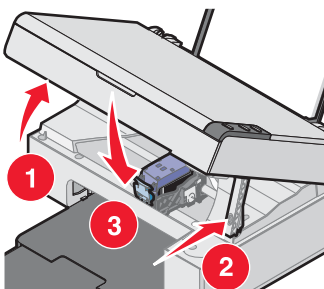
- 2 Unless it is already open, press down on the cartridge lever to raise the cartridge lid.
- 3 Insert the cartridge in the carrier.



- 4 Snap the lid closed.



- 5 While lifting the scanner unit, press the scanner support back until it slides into the slot, and close the scanner unit.



**Note:** The scanner unit must be closed to start a new print, scan, or copy job.

## ***Aligning the print cartridge***



Following cartridge installation, you should align your cartridge. However, you may also need to align the cartridge when:

- Characters are not properly formed or are not aligned at the left margin.
- Lines that should be vertical and straight are printed as wavy.

To align the cartridge using a computer:

- 1** Load plain paper. For more information, see “Loading paper into the paper support” on page 27.
- 2** Open the Lexmark Solution Center. For more information, see “Using the Lexmark Solution Center” on page 25.
- 3** From the Maintenance tab, click **Align to fix blurry edges**.
- 4** Follow the instructions on the computer screen.

To align the cartridge from the control panel:

- 1** Load plain paper. For more information, see “Loading paper into the paper support” on page 27.
- 2** Press and hold the  button for three seconds.  
An alignment page prints.
- 3** Place the alignment page onto the scanner glass. For more information, see “Placing documents on the scanner glass” on page 32.
- 4** Press the  button.

Once scanning is complete, the cartridge has been aligned for optimal print quality. Alignment must be complete before continuing with any print jobs.



## ***Improving print quality***

If you are not satisfied with the print quality of the document:

- Use paper that is a heavier weight, is bright white, or is coated.
- Select a higher print quality:
  - 1 With a document open, click **File** → **Print**.  
The Print dialog appears.
  - 2 From the Print dialog, click **Properties**, **Preferences**, or **Options**.
  - 3 From the Quality/Speed area, select a higher quality setting.
  - 4 Print the document again.

If the document still does not have the print quality you want, align the print cartridge, and print the document again. For more information, see “Aligning the print cartridge” on page 56.

If print quality has not improved, continue with “Cleaning the print cartridge nozzles”.

## ***Cleaning the print cartridge nozzles***

- 1 Load paper. For more information, see “Loading paper into the paper support” on page 27.
- 2 Click **Start** → **Programs** → **Lexmark 2300 Series** → **Lexmark Solution Center**.
- 3 From the Maintenance tab, click **Clean to fix horizontal streaks**.
- 4 Click **Print**.

A page prints, forcing ink through the clogged nozzles to clean them.

- 5 Print the document again to verify that the print quality has improved.

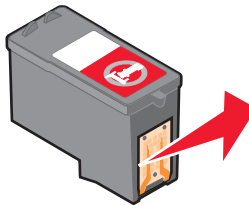
If you are not satisfied with the print quality, continue with “Wiping the print cartridge nozzles and contacts” on page 58.

## ***Wiping the print cartridge nozzles and contacts***

- 1** Remove the print cartridge. For more information, see “Removing a used cartridge” on page 52.
- 2** Dampen a clean, lint-free cloth with water.
- 3** Gently hold the cloth against the nozzles for about three seconds, and then wipe in the direction shown.



- 4** Using another clean section of the cloth, gently hold the cloth against the contacts for about three seconds, and then wipe in the direction shown.



- 5** With another clean section of the cloth, repeat steps 3 through 4.
- 6** Let the nozzles and contacts dry completely.
- 7** Reinsert the print cartridge. For more information, see “Installing the print cartridge” on page 54.
- 8** Print the document again.

If the print quality does not improve, repeat “Wiping the print cartridge nozzles and contacts” up to two more times.

If print quality is still not satisfactory, replace the print cartridge. For more information, see “Ordering supplies” on page 60.

## ***Preserving the print cartridge***

To ensure the longest life from the print cartridge and optimum performance from the All-In-One:

- Keep a new print cartridge in its packaging until you are ready to install it.
- Do not remove the print cartridge from the All-In-One except to replace, clean, or store it in an airtight container.

Lexmark’s All-In-One warranty does not cover repair of failures or damage caused by a refilled cartridge. Lexmark does not recommend the use of refilled cartridges. Refilling cartridges can affect print quality and cause damage to the All-In-One. For best results, use Lexmark supplies.

## ***Cleaning the scanner glass***

- 1** Dampen a clean, lint-free cloth with water.
- 2** Gently wipe the scanner glass.

**Note:** Make sure all ink or corrective fluid on a document is dry before placing the document on the scanner glass.

## Ordering supplies

To order All-In-One supplies or to locate a dealer near you, visit the Lexmark Web site at [www.lexmark.com](http://www.lexmark.com).

The Lexmark 2300 Series All-In-One is designed to print using these parts:

Print cartridge part number	USB cable part number
<ul style="list-style-type: none"><li>• 1</li><li>• 2</li></ul>	12A2405

Lexmark offers premium photo paper, optimized for Lexmark inkjet printers and inks:

Lexmark photo paper types and sizes
<ul style="list-style-type: none"><li>• Photo paper (glossy) 4 x 6</li><li>• Photo paper (glossy) 8 1/2 x 11</li><li>• Photo paper (glossy) A4</li><li>• Premium photo paper (high gloss) 4 x 6</li><li>• Premium photo paper (high gloss) 8 1/2 x 11</li><li>• Premium photo paper (high gloss) A4</li><li>• Premium photo paper (high gloss) L</li></ul>

## Recycling Lexmark products

To return Lexmark products to Lexmark for recycling:

- 1 Visit our Web site:  
[www.lexmark.com/recycle](http://www.lexmark.com/recycle)
- 2 Follow the instructions on the screen.



# Troubleshooting

---

Should the All-In-One have a problem, this section helps you find the solution. From the following list, select the category that best describes the type of problem you are having. Turn to the page listed, and use the table to find solutions to specific symptoms.

- “Setup troubleshooting” on page 62
- “Jams and misfeeds troubleshooting” on page 65
- “Print troubleshooting” on page 66
- “Scan and copy troubleshooting” on page 69
- “Error messages troubleshooting” on page 71

# Setup troubleshooting

Symptom	Solution
The Power light is not lit	<ol style="list-style-type: none"> <li>1 Disconnect the power supply cord from the wall outlet, and then from the All-In-One.</li> <li>2 Plug the cord all the way into the power supply on the All-In-One.</li> <li>3 Plug the cord into an electrical outlet that other electrical devices have been using.</li> <li>4 If the  button light is not on, press the  button.</li> </ol>
Software will not install	<p>If the software does not launch automatically when you insert the CD:</p> <ol style="list-style-type: none"> <li>1 Close all open software applications.</li> <li>2 Temporarily disable any anti-virus programs.</li> <li>3 Double-click the <b>My Computer</b> icon. For Windows XP, click <b>Start</b> to access the My Computer icon.</li> <li>4 Double-click the <b>CD-ROM drive</b> icon.</li> <li>5 If necessary, double-click <b>setup.exe</b>.</li> <li>6 Follow the instructions on the computer screen to install the software.</li> </ol> <p><b>Note:</b> After installing the software, be sure to re-enable your anti-virus software.</p> <p>The following operating systems are supported:</p> <ul style="list-style-type: none"> <li>• Windows 98/Me</li> <li>• Windows 2000</li> <li>• Windows XP</li> </ul> <ol style="list-style-type: none"> <li>1 Remove the software CD.</li> <li>2 Turn off the computer.</li> <li>3 Restart the computer.</li> <li>4 When the desktop appears, reinsert the software CD.</li> <li>5 Follow the instructions on the computer screen.</li> </ol>

Symptom	Solution
Software will not install	<ol style="list-style-type: none"> <li><b>1</b> Check the USB cable for any obvious damage.</li> <li><b>2</b> Firmly plug the rectangular end of the USB cable into the USB port of the computer. The USB port is marked with the USB symbol.</li> <li><b>3</b> Firmly plug the square end of the USB cable into the back of the All-In-One.</li> </ol>
	<p>If the All-In-One is connected to the computer through another device:</p> <ol style="list-style-type: none"> <li><b>1</b> Disconnect the USB cable from any other device such as a USB hub or switch box.</li> <li><b>2</b> Directly connect the cable to the All-In-One and the computer.</li> </ol>
Page will not print	<p>Make sure the All-In-One is set as the default printer and is not on hold or paused. For more information, see “Checking the All-In-One status” on page 68.</p>
	<p>Make sure the tape has been removed from the print cartridge and that the print cartridge has been installed properly.</p> <p>For more information, see “Replacing the print cartridge” on page 52.</p>

## ***Removing and reinstalling the software***

If the All-In-One software is not functioning properly or a communications error message appears, you may need to remove and then reinstall the All-In-One software.

**Note:** Before reinstalling, shut down and restart the computer.  
If the problems persist, follow these steps:

- 1** From the desktop, click **Start** → **Programs** → **Lexmark 2300 Series** → **Uninstall**.
- 2** Follow the instructions on the computer screen to remove the All-In-One software.
- 3** Restart the computer.
- 4** Click **Cancel** on any Add New Hardware screens.
- 5** Eject and reinsert the software CD.

If the All-In-One software installation screen does not appear:



- a** From the desktop, double-click **My Computer**.  
For Windows XP, click **Start** to access the My Computer icon.
- b** Double-click the **CD-ROM drive** icon. If necessary, double-click **setup.exe**.
- c** When the All-In-One software installation screen appears, click **Install** or **Install Now**.
- d** Follow the instructions on the computer screen to complete the installation.



# Jams and misfeeds troubleshooting



To prevent jams and misfeeds:

- Place the All-In-One on a flat, level surface.
- Use paper recommended for an inkjet All-In-One.
- Do not force the paper into the All-In-One.

Symptom	Solution
Paper jam in the paper support	<ol style="list-style-type: none"> <li>1 Firmly grasp the paper, and gently pull it out.</li> <li>2 Press the  button to reset the All-In-One.</li> </ol>
Paper jam inside the All-In-One	<ol style="list-style-type: none"> <li>1 Lift the scanner unit.</li> <li>2 Snap the scanner support into position to hold up the scanner unit.</li> <li>3 Firmly grasp the paper, and gently pull it out.</li> <li>4 While lifting the scanner unit, press the scanner support back until it slides into the slot, and close the scanner unit.</li> <li>5 Press the  button to reset the All-In-One.</li> </ol>
Paper or specialty media: <ul style="list-style-type: none"> <li>• misfeeds or skews</li> <li>• multiple sheets feed or stick together</li> </ul>	Load a smaller amount of paper into the All-In-One. See “Loading paper into the paper support” on page 27 for information about: <ul style="list-style-type: none"> <li>• Maximum loading amounts for each paper type</li> <li>• Paper exit tray capacity</li> <li>• Specific loading instructions for supported paper and specialty media</li> </ul>
	Load paper with the print side facing you.
	Remove each page as it exits the All-In-One, and let it dry completely before stacking.
	Use only new, unwrinkled paper.

# Print troubleshooting

Symptom	Solution
<p>Poor text and graphic quality, including:</p> <ul style="list-style-type: none"> <li>• Blank page</li> <li>• Incorrect colors</li> <li>• Missing characters</li> <li>• Faded print</li> <li>• Dark print</li> <li>• Skewed lines</li> <li>• Smudges</li> <li>• Streaks</li> <li>• Unexpected characters</li> <li>• White lines in print</li> </ul>	<p>If you are using the scan or copy features, see “Scan and copy troubleshooting” on page 69.</p>
	<p>Check the ink levels, and install a new print cartridge if necessary.</p>
	<p>See “Improving print quality” on page 57.</p>
	<p>To avoid ink smudging when you are using the following types of media, remove each sheet as it exits and allow it to dry before stacking:</p> <ul style="list-style-type: none"> <li>• Document with graphics or images</li> <li>• Photo paper</li> <li>• Coated or glossy paper</li> <li>• Transparencies</li> <li>• Iron-on transfers</li> </ul> <p><b>Note:</b> Transparencies may take up to 15 minutes to dry.</p>
	<p>Use high quality paper or specialty media. For photo printing, we recommend Lexmark photo paper.</p>
	<p>Use only new, unwrinkled paper.</p>
<p>Poor text and graphic quality at the edges of the page</p>	<p>Unless you are using the borderless feature, use these minimum print margin settings:</p> <ul style="list-style-type: none"> <li>• Left and right margins: <ul style="list-style-type: none"> <li>– 6.35 mm (0.25 inches) for all paper except A4</li> <li>– 3.175 mm (0.125 inches) for A4 size paper</li> </ul> </li> <li>• Top margin: 1.7 mm (0.067 inches)</li> <li>• Bottom margin: 19 mm (0.75 inches)</li> </ul>


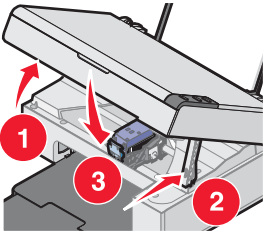
Symptom	Solution
Poor quality at the edges of the page	<p>Select the Borderless print feature.</p> <ol style="list-style-type: none"> <li>1 From the software application, Click <b>File</b> → <b>Print</b> → <b>Properties, Preferences, Options, or Setup</b>.</li> <li>2 Click <b>Print Layout</b>.</li> <li>3 Click <b>Borderless</b>.</li> </ol>
	<p>Make sure that the paper size being used matches the printer setting.</p> <ol style="list-style-type: none"> <li>1 From the software application, click <b>File</b> → <b>Print</b> → <b>Properties, Preferences, Options, or Setup</b>.</li> <li>2 Click <b>Paper Setup</b>.</li> <li>3 Check the paper size.</li> </ol>
All-In-One does not print or respond	See “Page will not print” on page 63.
	Uninstall the All-In-One software, and reinstall it. See “Removing and reinstalling the software” on page 64.
	See “Checking the All-In-One status” on page 68.
	<ol style="list-style-type: none"> <li>1 Turn the printer off by pressing the  button.</li> <li>2 Disconnect the power supply cord from the electrical outlet.</li> <li>3 Gently remove the power supply from the printer.</li> <li>4 Reconnect the power supply to the printer.</li> <li>5 Plug the power supply cord back into the electrical outlet.</li> <li>6 Press the  button to turn the printer back on.</li> </ol>
	Restart the computer.
Print speed is slow	Close all applications not in use.
	Try minimizing the number and size of graphics and images in the document.
	Consider purchasing more Random Access Memory (RAM) for the computer.

## ***Checking the All-In-One status***

Check the All-In-One status to make sure a document is not being held or paused and that the All-In-One is set as the default printer. To check the status:

- 1** Click **Start → Settings → Printers and Faxes** or **Printers**.  
*or*  
Click **Start → Control Panel → Printers and Other Hardware → Printers and Faxes**.
- 2** Double-click the **Lexmark 2300 Series** icon.
- 3** Click **Printer**, and make sure no check mark appears next to **Pause Printing**.
- 4** Make sure a check mark does appear next to **Set As Default**.

# Scan and copy troubleshooting

Symptom	Solution
Scanner or copier does not respond	If the  button light is not on, see “The Power light is not lit” on page 62.
	Make sure the computer is on.
	<ol style="list-style-type: none"><li>1 Check the USB cable for any obvious damage.</li><li>2 Firmly plug the rectangular end of the USB cable into the USB port of the computer. The USB port is marked with the USB symbol.</li><li>3 Firmly plug the square end of the USB cable into the back of the All-In-One.</li></ol>
	Make sure the All-In-One is set as the default printer and is not on hold or paused. For more information, see “Checking the All-In-One status” on page 68.
	See “Scanning takes too long or freezes the computer” on page 70.
	If none of the previous options fix the problem, uninstall the All-In-One software and reinstall it. For more information, see “Removing and reinstalling the software” on page 64.
Scanner unit does not close	<ol style="list-style-type: none"><li>1 Lift the scanner unit.</li><li>2 Remove any obstruction keeping the scanner unit open.</li><li>3 While lifting the scanner unit, press the scanner support back until it slides into the slot, and close the scanner unit.</li></ol> 

Symptom	Solution
Scanning takes too long or freezes the computer	<p>Close all programs not being used.</p> <p>To change the scanning resolution to a lower value:</p> <ol style="list-style-type: none"> <li>1 Click <b>Start</b> → <b>Programs</b> → <b>Lexmark 2300 Series</b> → <b>All-In-One Center</b>.</li> <li>2 From the Scan area, click <b>See More Scan Settings</b>.</li> <li>3 Click <b>Display Advanced Scan Settings</b>.</li> <li>4 From the Scan Resolution area, select a lower number.</li> </ol>
<p>Poor quality from scan or copy feature including:</p> <ul style="list-style-type: none"> <li>• Blank page</li> <li>• Checkerboard pattern</li> <li>• Distorted graphics or pictures</li> <li>• Missing characters</li> <li>• Faded print</li> <li>• Dark print</li> <li>• Skewed lines</li> <li>• Smudges</li> <li>• Streaks</li> <li>• Unexpected characters</li> <li>• White lines in print</li> </ul>	<p>Be sure the document is placed face down on the scanner glass.</p> <p>See “Changing copy settings” on page 44.</p> <p>Gently wipe the scanner glass with a damp, clean, lint-free cloth.</p> <p>Try using another version of the document or image.</p> <p>See “Aligning the print cartridge” on page 56.</p> <p>See “Improving print quality” on page 57.</p> <p>Replace the print cartridge with a new cartridge. For more information, see “Replacing the print cartridge” on page 52.</p>

# Error messages troubleshooting

Error Message	Solution
Ink Low	<p>Check the ink cartridge level, and install a new cartridge if necessary.</p> <p>To check the ink cartridge level, open the Lexmark Solution Center. See “Using the Lexmark Solution Center” on page 25.</p> <p>To install a new cartridge, see “Replacing the print cartridge” on page 52.</p> <p>The Ink Low warning occurs when the cartridge is 25% full, 15% full, and 10% full.</p>
Paper Jam	See “Jams and misfeeds troubleshooting” on page 65.
Paper Out	Load more paper into the All-In-One. For more information, see “Loading paper into the paper support” on page 27.
Power light blinks twice	<ol style="list-style-type: none"> <li>1 Open the scanner unit.</li> <li>2 Remove the print cartridge. For more information, see “Removing a used cartridge” on page 52.</li> <li>3 Close the scanner unit.</li> <li>4 If the blinking stops, reinstall the print cartridge.</li> </ol> <p>If the blinking continues, replace the print cartridge with a new one.</p> <p>For more information, see “Installing the print cartridge” on page 54.</p>

# Notices

---

## Electronic emission notices

### Federal Communications Commission (FCC) compliance information statement

The Lexmark 2300 Series All-In-One (4420-001) has been tested and found to comply with the limits for a Class B digital device, pursuant to Part 15 of the FCC Rules. Operation is subject to the following two conditions: (1) this device may not cause harmful interference, and (2) this device must accept any interference received, including interference that may cause undesired operation.

The FCC Class B limits are designed to provide reasonable protection against harmful interference in a residential installation. This equipment generates, uses, and can radiate radio frequency energy and, if not installed and used in accordance with the instructions, may cause harmful interference to radio communications. However, there is no guarantee that interference will not occur in a particular installation. If this equipment does cause harmful interference to radio or television reception, which can be determined by turning the equipment off and on, the user is encouraged to try to correct the interference by one or more of the following measures:

- Reorient or relocate the receiving antenna.
- Increase the separation between the equipment and receiver.
- Connect the equipment into an outlet on a circuit different from that to which the receiver is connected.
- Consult your point of purchase or service representative for additional suggestions.

The manufacturer is not responsible for any radio or television interference caused by using other than recommended cables or by unauthorized changes or modifications to this equipment. Unauthorized changes or modifications could void the user's authority to operate this equipment.

**Note:** To assure compliance with FCC regulations on electromagnetic interference for a Class B computing device, use a properly shielded and grounded cable such as Lexmark part number 12A2405 for USB attach. Use of a substitute cable not properly shielded and grounded may result in a violation of FCC regulations.

Any questions regarding this compliance information statement should be directed to:

Director of Lexmark Technology & Services  
Lexmark International, Inc.  
740 West New Circle Road  
Lexington, KY 40550  
(859) 232-3000

### Industry Canada compliance statement

This Class B digital apparatus meets all requirements of the Canadian Interference-Causing Equipment Regulations.

### Avis de conformité aux normes de l'industrie du Canada

Cet appareil numérique de la classe B respecte toutes les exigences du Règlement sur le matériel brouilleur du Canada.

### European Community (EC) directives conformity

This product is in conformity with the protection requirements of EC Council directives 89/336/EEC and 73/23/EEC on the approximation and harmonization of the laws of the Member States relating to electromagnetic compatibility and safety of electrical equipment designed for use within certain voltage limits.



A declaration of conformity with the requirements of the directives has been signed by the Director of Manufacturing and Technical Support, Lexmark International, S.A., Boigny, France. This product satisfies the Class B limits of EN 55022 and safety requirements of EN 60950.

**Japanese VCCI notice**

If this symbol appears on your product, the accompanying statement is applicable.



この装置は、情報処理装置等電波障害自主規制協議会(VCCI)の基準に基づくクラスB情報技術装置です。この装置は、家庭環境で使用することを目的としていますが、この装置がラジオやテレビジョン受信機に近接して使用されると、受信障害を引き起こすことがあります。取扱説明書に従って正しい取り扱いをしてください。

**Korean MIC statement**

If this symbol appears on your product, the accompanying statement is applicable.



이 기기는 가정용으로 전자파 적합등록을 한 기기로서 주거지역에서는 물론 모든 지역에서 사용할 수 있습니다.

This equipment has undergone EMC registration as a household product. It can be used in any area, including a residential area.

**Noise emission levels**

The following measurements were made in accordance with ISO 7779 and reported in conformance with ISO 9296.

1-meter average sound pressure, dBA	
Printing	50 or less
Idling	0

**ENERGY STAR**



The EPA ENERGY STAR Office Equipment program is a partnership effort with office equipment manufacturers to promote the introduction of energy-efficient products and to reduce air pollution caused by power generation.

Companies participating in this program introduce products that power down when they are not being used. This feature will cut the energy used by up to 50 percent. Lexmark is proud to be a participant in this program.

As an ENERGY STAR Partner, Lexmark International, Inc. has determined that this product meets the ENERGY STAR guidelines for energy efficiency.

## Printer energy consumption

The following table documents the energy power consumption characteristics of the printer.

Mode	Description	Power consumption
Printing	Product is generating hard copy output from electronic inputs	12 W
Copying	Product is generating hard copy output from hard copy originals	10 W
Scanning	Product is scanning hard copy documents	6.6 W
Ready	Product is waiting for a print job	5 W
Off	All-In-One is plugged into a wall outlet, but switch is turned off	4.8 W

The power consumption levels listed in the previous table represent time-averaged measurements. Instantaneous power draws may be substantially higher than the average.

### Power Saver

As part of the ENERGY STAR program, this printer is designed with an energy saving mode called Power Saver. The Power Saver Mode is equivalent to the EPA Sleep Mode. The Power Saver Mode saves energy by lowering power consumption during periods of inactivity. The period of time between the last operation and entering Power Saver is called the Power Saver Timeout. For this product, the Power Saver Mode is entered after 0 minutes. The Power Saver Timeout cannot be modified by the user.

### Off modes

This printer has an off mode which still consumes a small amount of power. To completely stop printer power consumption, disconnect the power supply from the wall outlet.

### Total energy usage

It is sometimes helpful to calculate the total printer energy usage. Since power consumption claims are provided in power units of Watts, the power consumption should be multiplied by the time the printer spends in each mode in order to calculate energy usage. The total printer energy usage is the sum of each mode's energy usage.

### Waste from Electrical and Electronic Equipment (WEEE) directive



The WEEE logo signifies specific recycling programs and procedures for electronic products in countries of the European Union. We encourage the recycling of our products. If you have further questions about recycling options, visit the Lexmark Web site at [www.lexmark.com](http://www.lexmark.com) for your local sales office phone number.

# Index

---

## A

- Advanced tab 26
- All-In-One Center 15
- All-In-One Center tabs
  - Saved Images 17
  - Scanning & Copying 16
- All-In-One parts 9
- All-In-One software 12

## B

- banner paper 29
- borderless printing 35

## C

- cartridge
  - aligning 56
  - cleaning 57
  - installing 54
  - ordering 60
  - preserving 59
  - removing 52
  - replacing 52
- changing print settings 33
- cleaning
  - print cartridge nozzles 57
  - scanner glass 59
- coated paper 30
- Contact Information tab 26
- control panel
  - menus 11
  - using 11
- Copy section 16

- copy troubleshooting 69
- copying
  - document 43
  - photos 45
  - photos, 4x6 46
- Creative Tasks section 16, 17
- customizing
  - print settings 33

## E

- editing
  - document text (OCR) 42
  - graphics 20
- e-mailing
  - document 41
  - image 41
- emission statement 72
- envelopes 31
- error messages
  - Ink Low 71
  - Paper Jam 71
  - Paper Out 71

## F

- Fast Pics 18
- faxing
  - receiving 48
  - sending 47
- FCC statement 72
- finding more information 7

## G

- glossy paper 28

- greeting cards 29

## H

- How To tab 26

## I

- I Want To menu 23
- improving print quality 57
- ink low 71
- installing
  - print cartridges 54
  - software 64
- iron-on transfers 28

## J

- jams and misfeeds 65

## L

- Lexmark All-In-One Center 15
- Lexmark Fast Pics 18
- Lexmark Imaging Studio 13
- Lexmark Photo Editor 20
- Lexmark products
  - ordering 60
  - recycling 60
- Lexmark Solution Center (LSC) 25
- Lexmark Solution Center tabs
  - Advanced 26
  - Contact Information 26
  - How To 26
  - Maintenance 26

- Printer Status 26
- Troubleshooting 26
- Lexmark Web site 60
- loading
  - 4 x 6 cards 29
  - banner paper 29
  - documents on scanner
    - glass 32
  - envelopes 31
  - glossy paper 28
  - greeting cards 29
  - photo cards 29
  - photo paper 28
  - plain paper 28
  - transparencies 30
- low ink 71

## M

- Maintain/Troubleshoot
  - page links 18
  - maintaining the
    - All-In-One 52
- Maintenance tab 26

## N

- networking 49
  - peer-to-peer
    - method 50
  - point-and-print
    - method 51
- nozzles, print cartridge
  - cleaning 57
  - wiping 58

## O

- OCR
  - editing document
    - text 42
- Open with section 17
- ordering supplies 60
- out of paper 71

## P

- paper exit tray 9
- paper guide 9
- paper jam 71
- paper out 71
- Paper Setup tab 24
- paper support 9
- paper, loading 27
- photo cards 29
- Photo Editor
  - opening 20
  - task menus 21
  - using 20
- photo paper 28
- Photo Prints section 17
- placing documents on the scanner glass 32
- postcards 29
- power light
  - blinks twice 71
  - not lit 62
- power supply cord 8
- preserving print cartridges 59
- Preview section 16
- print cartridge
  - aligning 56
  - cleaning 57
  - installing 54
  - ordering 60
  - preserving 59
  - removing 52
  - replacing 52
- Print Layout tab 25
- Print Properties
  - I Want To menu 23
  - using 22
- Print Properties tabs 24
- print settings
  - changing 33
  - customizing 33
- print troubleshooting 66
- Printer Status tab 26
- printing

- borderless photos 35
- documents 33
- photos 34
- projects
  - collating copies 36
  - creating a booklet 36
  - faxing 47
  - making a poster 36
  - printing a banner 36
  - printing a greeting card 36
  - printing a photo 36
  - printing last page
    - first 36
  - printing on an envelope 36
  - scanning a photograph to e-mail 41

## R

- receiving a fax 48
- recycling 60
- reinstalling software 64
- removing
  - print cartridge 52
  - software 64
- replacing print cartridge 52

## S

- safety information 2
- Saved Images tab 17
- Scan section 16
- scan troubleshooting 69
- scanner glass
  - cleaning 59
  - placing documents on 32
- scanner unit 10
- scanning 37
- sending a fax 47
- setup troubleshooting 61
- software
  - Lexmark All-In-One

- Center 15
- Lexmark Fast Pics 18
- Lexmark Imaging
  - Studio 13
- Lexmark Photo Editor 20
- Lexmark Solution Center 25
- Print Properties 22
- reinstalling 64
- removing 64
- understanding 12
- uninstalling 64
- specialty paper
  - banner paper 29
  - envelopes 31
  - greeting cards 29
  - photo/glossy paper 28
  - postcards 29
  - transparencies 30
- supplies
  - ordering 60
  - recycling 60

## T

- top cover 9
- transparencies 30
- troubleshooting
  - All-In-One does not print or respond 67
  - Ink Low message 71
  - paper jam 65
  - Paper Out message 71
  - poor graphic quality 70
  - power light is not on 62
  - scanner or copier does not respond 69
  - scanner unit does not close 69
  - slow print speed 67
  - software will not

- install 62
- Troubleshooting tab 26

## U

- understanding
  - Lexmark Solution Center 25
  - Print Properties 22
- uninstalling software 64
- USB cable 60

## W

- Web site, Lexmark 60
- wiping print cartridge nozzles 58